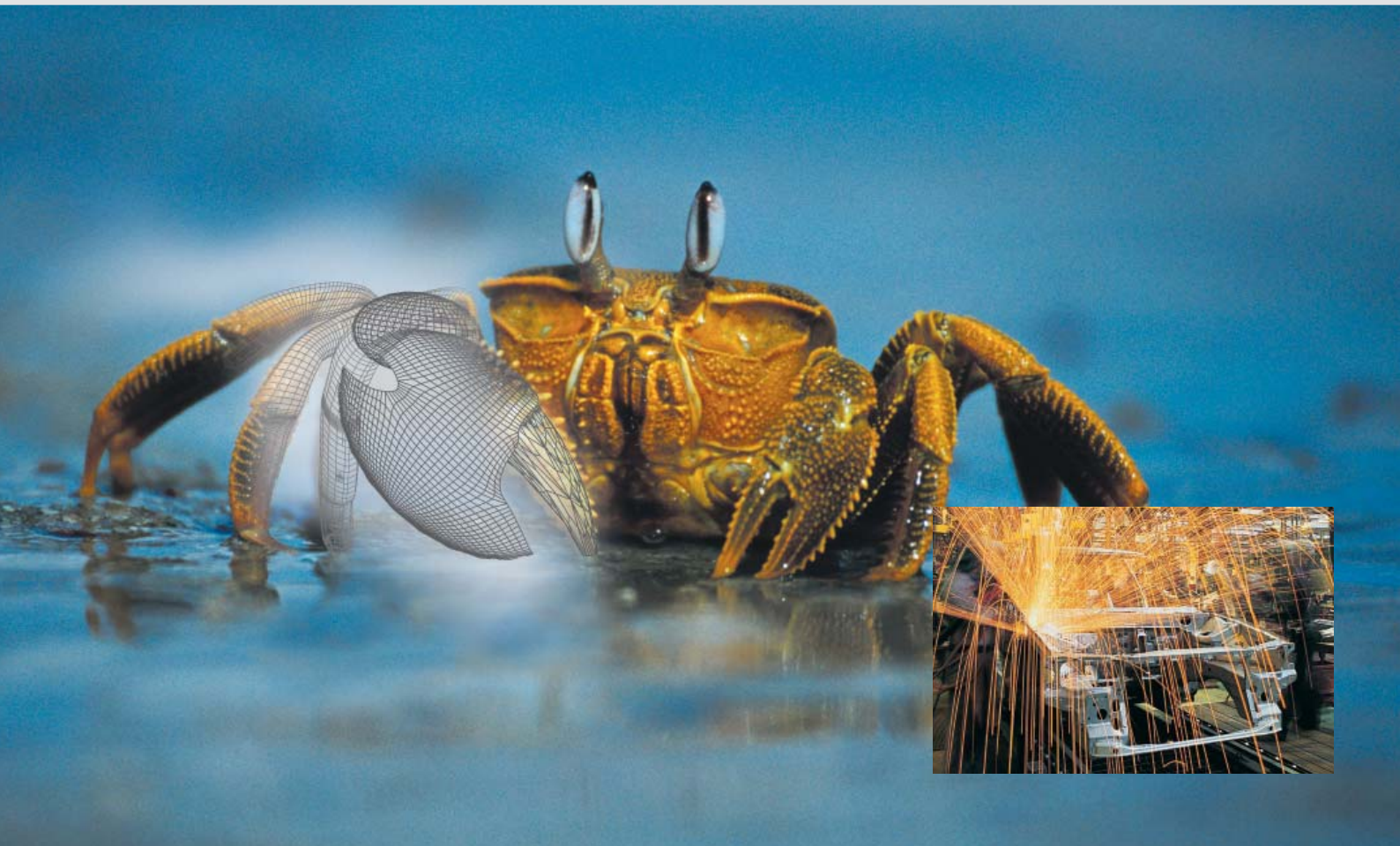




Industrial Services



Mechanical Engineering

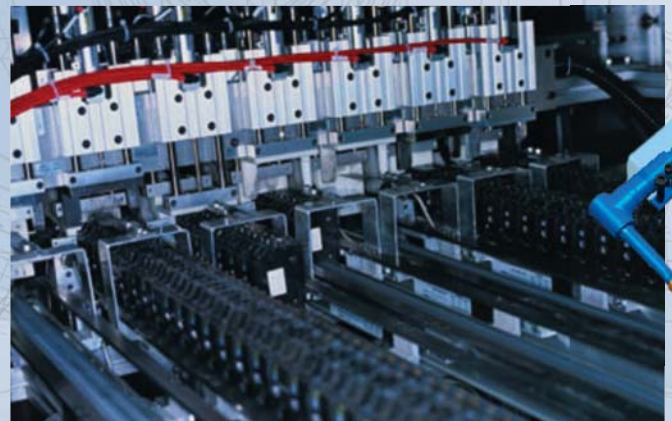
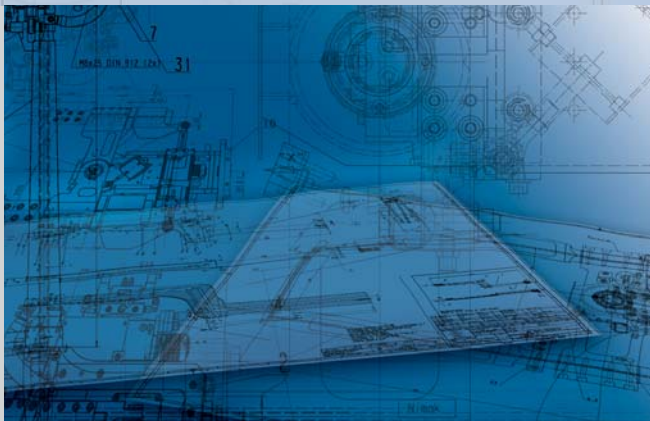
planingng · projecting · engineering · documenting



The use of state-of-the-art CAD tools is indispensable in the creation of innovative products.

Our scope of activities ranges from feasibility studies and drawing derivation to detailed designs for complex projects requiring several thousand labor hours.

We provide the services you need, meeting the quality, schedule, and location requirements you specify.

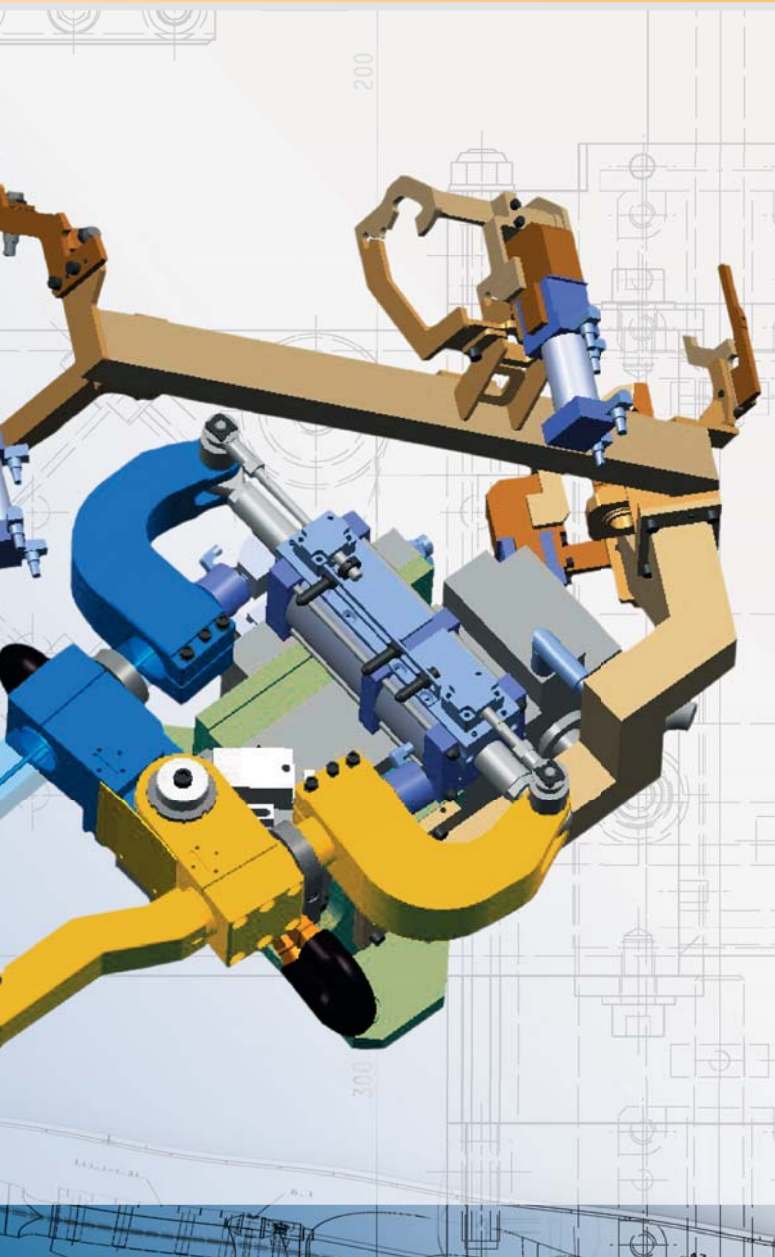


Design and development

The design and development of complex components requires the integration of technology, methods, and industrial experience.

Our staff are proficient in all common 2D and 3D CAD systems and are familiar with the design methods employed by our clients. We are able to call upon our industrial experience, including classic machine building and systems engineering in industries such as automobile and household appliance manufacturing.

Mechanical Engineering



Methods and tools

- Design in 2D and 3D
- Creation and verification of quality CAD data
- Calculation of loads and stresses
- Simulation of complex stresses
- Mold filling procedures and robot accessibility
- Multi-language documentation
- International norms and standards
- Conversion of CAD data
- Support for switching from 2D to 3D

Joining technology

Manual welding tongs, robot welding tongs, press welding tools, joining cells, laser welding technology, bonding technology, clinch technology. Creation of straining concepts, joining gaps, accessibility and robot load-bearing capability studies, standardization and normalization.

Jigs and equipment

Manual or automated jigs for assembly, welding, processing, measuring and testing.

Special machine building

Joining and assembly of subassemblies and components, assembly of electronic components, handling of pharmaceutical products.

Creation of concepts and layouts, 3D modeling, and preparation of drawings and documentation for applications such as injection molding system component assembly machines or special machines for maintaining operating resources.

Plastics engineering

Synthetic materials-oriented conception of components in the automotive sector and in the consumer goods industry, including the design and development of products and associated molds, focusing on ease of ejection and mold simplicity.

Feasibility studies through mold filling simulation and rapid prototyping.

Production and supply of molds.

Materials handling technology

Workpiece carriers, handling systems, transport systems, transfer stations, assembly stations.

Use of existing modular systems or special solutions.

[is group]

U.S. Headquarters

www.0800technology.com

Global Engineering Services, Inc.

6075 The Corners Parkway, Suite 111

Norcross, GA 30092

U.S.A.

Phone 770 - 409 - 5855

Fax 678 - 495 - 3184

Technology Sectors:

- Automation
- Building Technology
- Communication Technology
- Electrical Engineering
- Intelligent Transportation Systems
- Installation
- Knowledge Management
- **Mechanical Engineering**
- Personnel Service
- Product Development
- Project Management
- Software Engineering
- Software Solutions
- Turnkey Projects